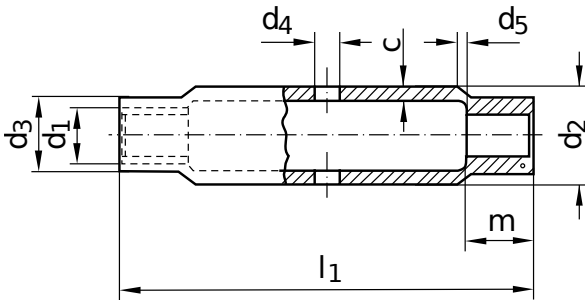


DIN 1478
Turnbuckle sleeves

Made from steel tube

Steel | zinc-plated | Cr(VI)-free | Metric thread

Further information: DIN 1478 turnbuckle nuts are to be assembled with DIN 34828 welding ends made of the same material.



| Diameter (d) | c | | | d ₁ nominal size | d ₂ | | | d ₃ min. | d ₄ | d ₅ | l ₁ | m min. | Pitch (P) | Length (l) nominal size |
|-----------------|--------------|------|------|--------------------------------|----------------|-------|-------|------------------------|----------------|----------------|----------------|-----------|--------------|----------------------------|
| | nominal size | min. | max. | | nominal size | min. | max. | | | | | | | |
| M6 | 2.9 | 2.61 | 3.34 | M 6 | 17.2 | 16.70 | 17.70 | 9.0 | 6 | 4.86 | 110 | 7.5 | 1.00 | 110 |
| M8 | 3.6 | 3.24 | 4.14 | M 8 | 17.2 | 16.70 | 17.70 | 12.0 | 8 | 6.57 | 110 | 10.0 | 1.25 | 110 |
| M10 | 4.0 | 3.60 | 4.60 | M 10 | 21.3 | 20.80 | 21.80 | 15.0 | 8 | 8.28 | 125 | 12.0 | 1.50 | 125 |
| M12 | 4.0 | 3.60 | 4.60 | M 12 | 25 | 24.50 | 25.50 | 18.0 | 10 | 9.99 | 125 | 15.0 | 1.75 | 125 |
| M16 | 4.5 | 4.05 | 5.18 | M 16 | 30 | 29.50 | 30.50 | 22.5 | 10 | 13.69 | 170 | 20.0 | 2.00 | 170 |
| M20 | 5.0 | 4.50 | 5.75 | M 20 | 33.7 | 33.20 | 34.20 | 27.0 | 12 | 17.15 | 200 | 24.0 | 2.50 | 200 |
| M24 | 5.6 | 5.04 | 6.30 | M 24 | 42.4 | 41.90 | 42.90 | 32.0 | 12 | 20.59 | 255 | 29.0 | 3.00 | 255 |
| M30 | 6.3 | 5.67 | 7.09 | M 30 | 51 | 50.49 | 51.51 | 38.0 | 16 | 25.99 | 255 | 36.0 | 3.50 | 255 |
| M36 | 8.0 | 7.20 | 9.00 | M 36 | 63.5 | 62.86 | 64.14 | 47.5 | 16 | 31.41 | 295 | 43.0 | 4.00 | 295 |

All technical data refer to the measure mm

